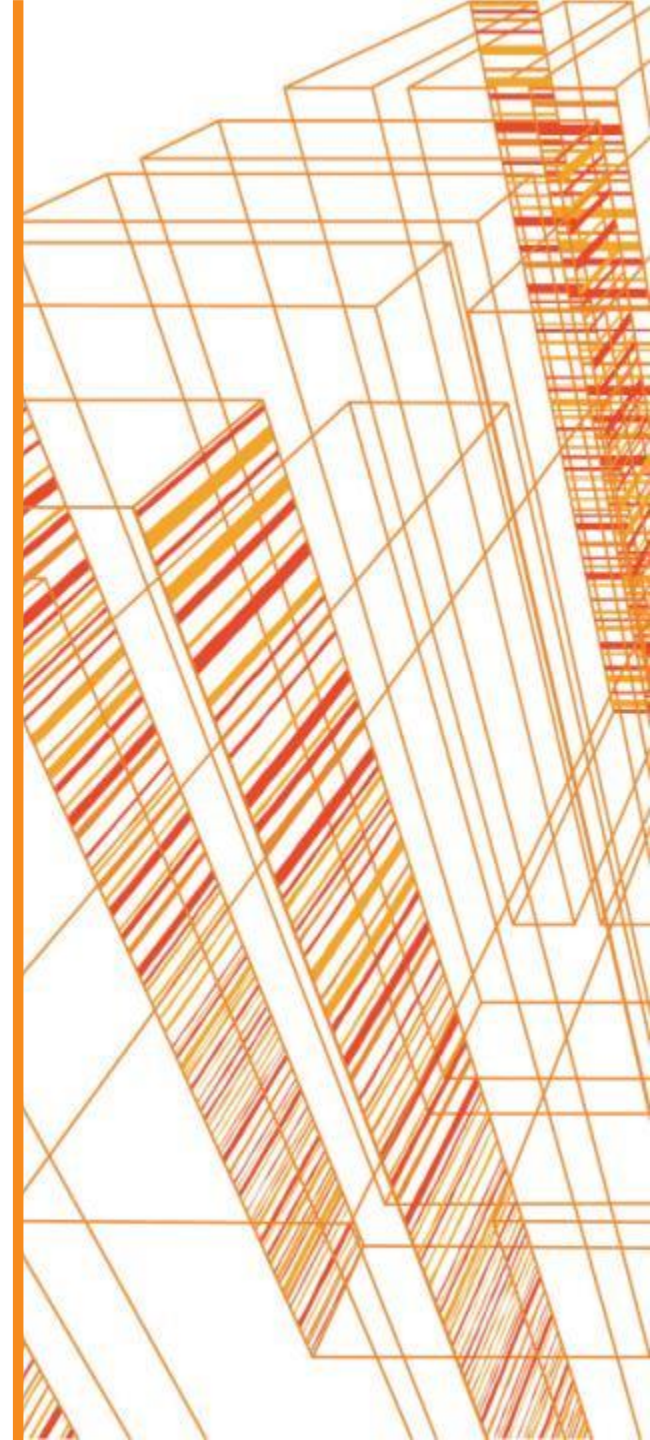


## **Facility No. 19 at Highveld Steel**

**(Administration Building)**

**Highveld Steel  
EMALAHLENI (WITBANK), SOUTH  
AFRICA**

July 2016





# Introduction

- ❑ Facility No. 19 description – Administration building
  
- ❑ G.A. Drawing
  
- ❑ Photographs



# Description

## Situated

- Highveld Steel Witbank Mpumalanga

### **Administration Building**

A double storey concrete and brick building with office space, conference rooms, reception area , switch board, kitchens, and ablution facilities.

It also provides for covered parking.

Area = Approximately 1965 SQM (Each Floor) (See Drawing attached)

Approximately 40 Furnished Offices of varying sizes

Air-conditioning in each office

Power = 220 V

Potable water points

Ablution facilities

3 Kitchen Facilities

Reception Area

6 meeting rooms

1 Large Boardroom

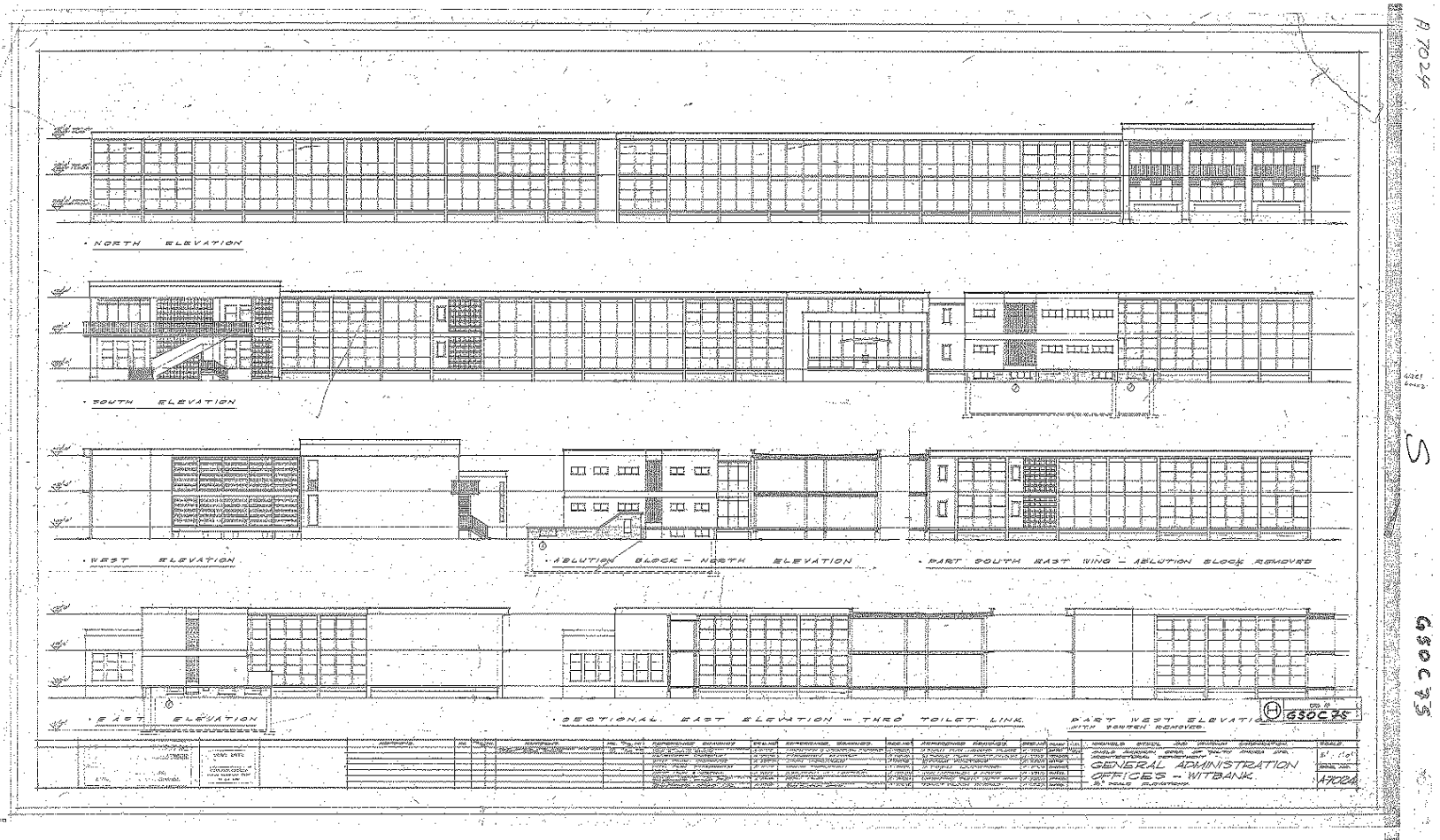
Conference Room / Training Room

Administration Building fully fenced in and access controlled

Parking available: 66 carports and 32 open (visitor) parking

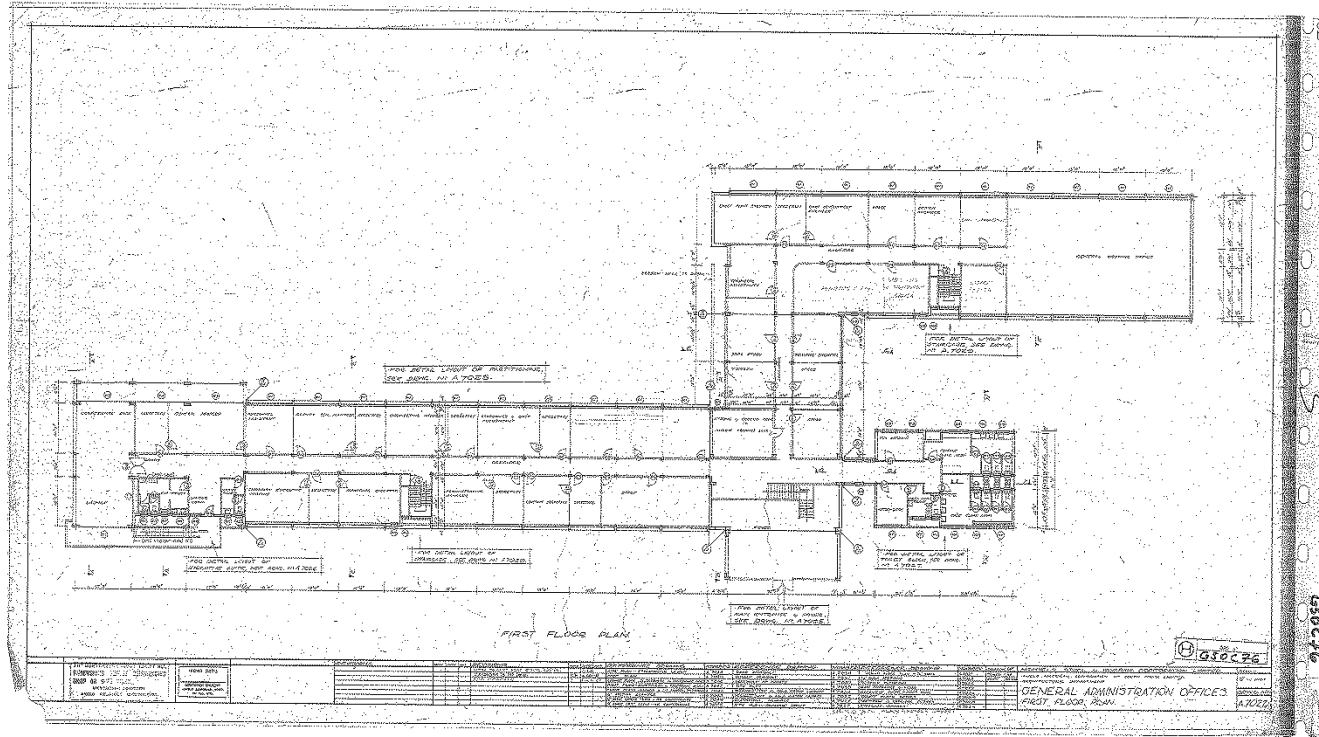


# Drawing G.A. Layout



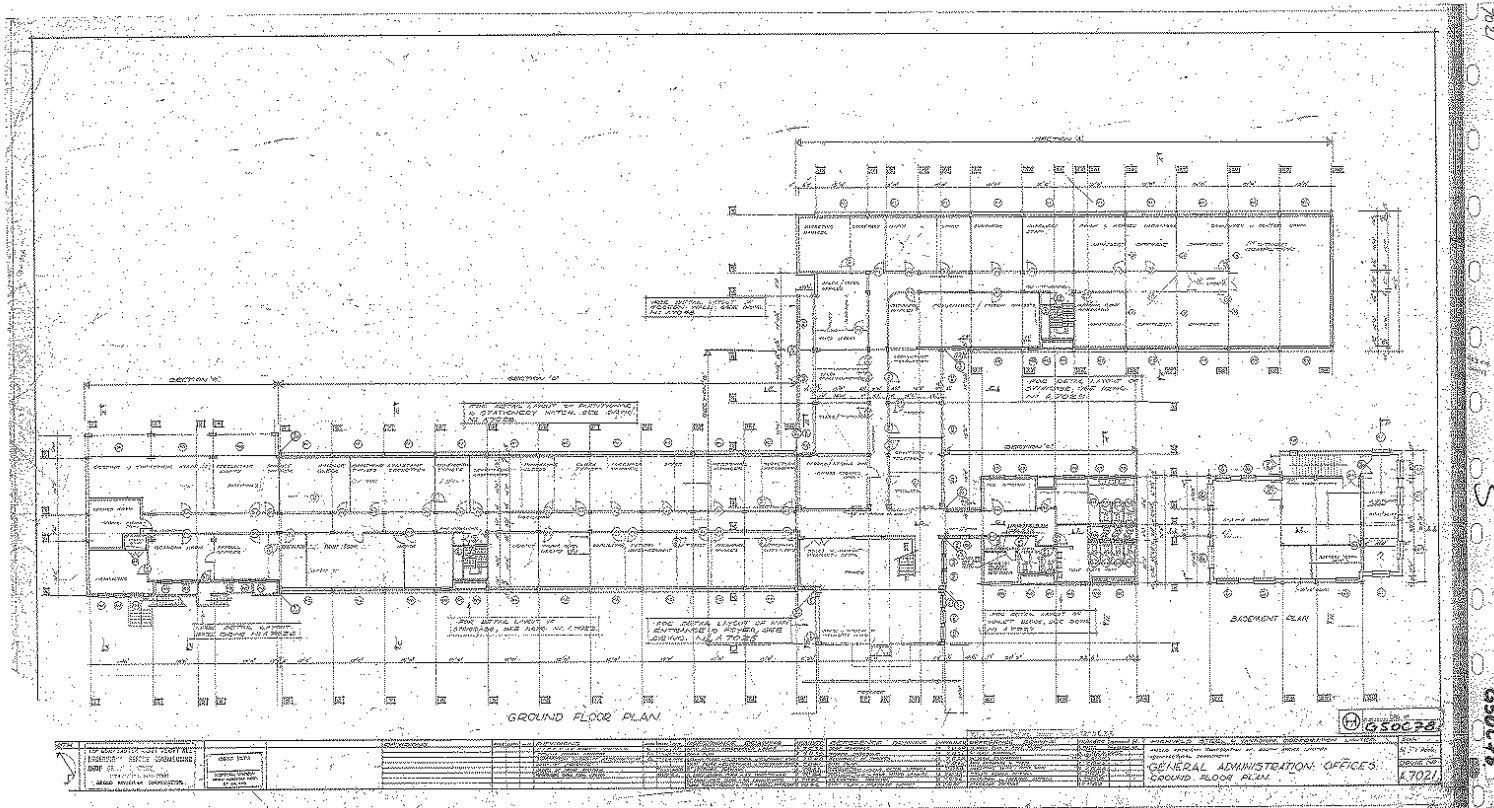


# Drawing G.A. Layout





# Drawing G.A. Layout





# Photographs





# Photographs







# Photographs

